

ISABEL'S HOUSE

WWW.ISABELSHOUSE.ORG

2024

SPONSORSHIP GUIDE



2750 WEST BENNETT STREET SPRINGFIELD, MO 65802

THANK YOU FOR YOUR SUPPORT



Letter from the Executive Director:

Isabel's House has had a lot of transition over the last couple years, leading to an all new team with an exciting new perspective for the organization. This team of incredible individuals are committed to ensuring the safety and happiness of our children and the success of our families. Our goal is to see through the dream started by our founders 16 years ago and be a safe haven for families in crisis. None of this is possible without the support of our donors, volunteers, and community. Thank you for being committed to preventing child abuse and neglect.

Sincerely,
Shayla Yardley

Letter from the Director of Development & Community Engagement:



Our fantastic and passionate new team at Isabel's House has worked diligently to create and implement a solid foundation and developmental vision to ensure a positive trajectory for success and continual growth in our organization. Fulfilling our 16-year goal and mission to protect and support our community's most vulnerable and prevent child abuse and neglect is not possible without the support and generosity of our phenomenal community partners. Thank you for being a community hero!

With gratitude,
Fatima Grover

Statistics

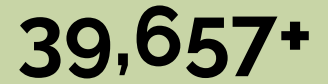


of parents who have trusted our team during a crisis report less stress at discharge (FY 22-23)



of children who have stayed at Isabel's House go home with their families (FY 22-23)

your gifts have provided



nights of safe care for more than 5,493 kids in our community (since 2007)



average length of stay in number of days (FY 22-23)



EVENT SPONSORSHIP OPPORTUNITIES



Isabel's Gala - March 23, 2024

Join us for a glamorous night of giving featuring delicious food, dancing, a fabulous live auction, a Diamond Raffle, Sponsor a Child opportunities, and outstanding entertainment from Red Light Runner!

**Presenting
\$20,000**

**Diamond
\$10,000**

**Red Carpet
\$5,000**

**Champagne
\$2,500**

**Program
\$1,500**

... for more levels, see our à la carte options!

This evening will be a time for us to celebrate the lives forever changed due to the crucial role Isabel's House plays in our community by protecting children and serving our local families.

Tax Credits Available! Read more on pg. 7

THE Summer Party - August 8, 2024

Isabel's House invites sponsors and guests to join us for the annual Summer Party! Gather your friends for a fun, summer night of drinks, food, Sponsor a Child opportunities, live music, and dancing!

**Presenting
\$15,000**

**Summer Night
\$10,000**

**Golden Sunset
\$5,000**

**Garden Party
\$2,500**

**Backyard Barbeque
\$1000**

... for more levels, see our à la carte options!



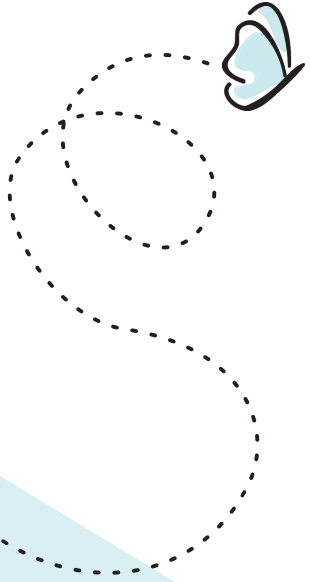
Help us celebrate 17 years of preventing child abuse & neglect in the Ozarks at THE event to wrap up the summer!



EVENT SPONSORSHIP OPPORTUNITIES

À La Carte Sponsorships

Want to support Isabel's House through Isabel's Gala or THE Summer Party but aren't able to attend? Consider becoming a sponsor for a specific element for our events! These sponsorships can also be combined with any of the Event Sponsorships, but there is only one of each per event.

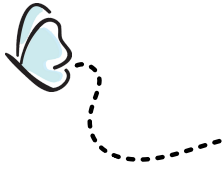


Photography	\$500
Videography	\$750
Wine	\$1,000
Floral/Décor	\$3,000
Audio/Visual	\$5,000
Food	\$10,000



Tax Credits Available! Read more on pg. 7




AWARENESS EVENT OPPORTUNITIES



What do you think could work for your team? Contact the Isabel's House Development Team to discuss how you can #GOBLUE!




GOBLUE Month - April

Isabel's House is committed to educating our community about child abuse and neglect as well as the steps we can take to prevent children from becoming statistics. During the month of April, you can join Isabel's House in spreading awareness about child abuse and neglect prevention resources.

-  Display a **pinwheel bouquet** at your business or organization
-  Have your team **wear blue on Fridays!** Then snap a photo, share on social media with #GOBLUESWMO and tag Isabel's House
-  Become a **Hope Butterfly Partner Location!** Partners sell & display paper butterflies throughout the month of April to raise awareness about child abuse & neglect prevention month and raise funds for Isabel's House

Isabel's Tree Lighting - November & December

Each year, our friends at **Houlihan's** partner with Isabel's House and other Campaign Partners in our area to hold a holiday fundraiser for Isabel's House through **Isabel's Tree**. Here's how it works:

-  **Throughout November & December**, Partners **sell paper bulbs and display them** to raise awareness about Isabel's House as a resource for the community and to raise funds for Isabel's House
-  Every \$10 raised lights a real bulb on Isabel's Tree
-  **Monday, November 18th**, friends of Isabel's House gather for dinner and **the annual Tree Lighting** at Houlihan's



Every dollar raised supports Isabel's House, funding essential daily operational services including: 24/7/365 trauma-informed child care, meals and snacks, transportation to & from school and appointments, clothing, shoes, hygiene items, and so much more.



THIRD-PARTY FUNDRAISERS

A Third-Party Fundraiser is an opportunity to get creative while raising money for Isabel's House families and children. There are no limits to the type of fundraiser a company can do, which allows for your fundraiser to embody your company's values and culture. Some examples of third-party fundraisers: donation drives, dress down days at your office, or an event that benefits Isabel's House.

Third-Party Fundraisers Planned So Far for 2023-2024:

Vos by Kienstra Beauty Event (*August -September 2023 & 2024*)
All registration fees for the event go to Isabel's House

MCC Corporate Golf Tournament (*September 2023*)
All registration fees for the event go to Isabel's House

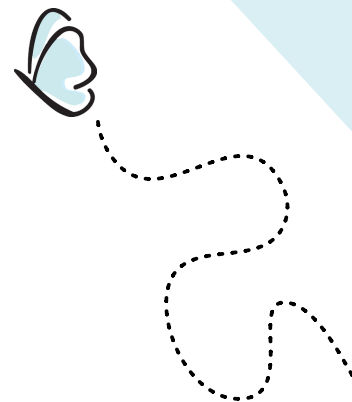
Wingalooza Corn Hole Tournament (*November 2023*)
All registration fees for the event go to Isabel's House

Ozarks Event Center Casino Night (*November 2023*)
All ticket sales for the event go to Isabel's House

Craft Sushi (*November 2023*)
100% of profit for the day benefits Isabel's House

Kendra Scott Gives Back (*February 2024*)
20% of profits during their shopping window benefits Isabel's House

... the rest are up to you! Let's collaborate!



Our goal is to have at least one each month in 2024. Contact a member of the Isabel's House Development Team to get on the Third-Party Fundraiser Calendar!

Ask us about our seasonal needs/wish lists to help you get started!



ADDITIONAL OPPORTUNITIES

Payroll Deductions

A recurring or one-time payroll deduction allows you to spread your pledge over the course of a year. Since payroll donations come out of after-tax earnings, **this donation is tax-deductible**. Some employers will even match your contributions to make an even bigger impact with your payroll deduction donation! This method of giving is a great way to include your whole company or organization in supporting Isabel's House.

71% of surveyed employees say it is imperative or very important to work where culture is supportive of giving and volunteering. (Source: [America's Charities Snapshot Employee Donor Research](#))

Brick Program

Be a part of the path that welcomes families to Isabel's House! For \$1,000 you can purchase a customized brick for your family or business for installation in the front walkway.



In-Kind Donations

Contributions of goods, services, and expertise are a wonderful way to support Isabel's House. Tax credit is often available.



Pillar of Hope Giving

Planned gifts to our endowment allow your contribution to continue benefiting children and families in our community. Your deferred gift to Isabel's House makes you a Pillar of Hope for the future of Isabel's House.

Ways to remember Isabel's House in your estate planning:

- Identifying Isabel's House as a beneficiary in your will or trust
- Identifying Isabel's House as a percentage beneficiary in your retirement plan or life insurance policy

AVAILABLE TAX CREDITS

Neighborhood Assistance Program (NAP)

The Neighborhood Assistance Program (NAP) Tax Credit allows **qualified businesses and individuals receiving certain types of business income** (see eligibility requirements*) to apply for a **50% credit** for contributions of \$1000 or more made to Isabel's House. This credit requires more detailed documentation, and your application must be initiated through Isabel's House.

*Eligibility Requirements for Donors:

- Businesses
- Individuals who operate a sole proprietorship, operate a farm, have rental property or have royalty income
- Shareholders in an S-corporation, a partner in a Partnership or a member of a Limited Liability Corporation



Champions for Children (CFC)

Eligible donations of \$100 or more for **donors residing in the state of Missouri** may apply for the Champion for Children (CFC) Tax Credit program. CFC allows qualifying individuals and businesses to apply for **up to a 50% credit** for a contribution made to Isabel's House. *Visit the Missouri Department of Revenue's website for more information.*

Donations must be made before December 31, 2023 to be eligible for either Tax Credit Program

NEARLY COVERS **THE ESSENTIAL COSTS** FOR A FULL WEEK OF CARE - FOOD, SHELTER, HYGIENE ITEMS, SCHOOL SUPPLIES, MEDICAL NEEDS, AND MORE - **FOR ONE CHILD AT ISABEL'S HOUSE**

YOUR QUALIFIED DONATION TO ISABEL'S HOUSE	\$1,500	\$3,000	\$7,000	\$10,000
Federal Income Tax Deduction	\$180	\$360	\$840	\$1,200
MO State Income Tax Deduction	\$40.50	\$81	\$189	\$270
50% MO Tax Credit (fully funded)	\$750	\$1,500	\$3,500	\$5,000
Total You Spend to Make Your Generous Gift*	\$529.50	\$1,059	\$2,471	\$3,530



SPONSORSHIP CONTRACT

Company Name

Contact Name

Email Address

Phone Number

Awareness Campaigns

GOBLUE Month - April

- Become a Hope Butterfly Partner Location
- Pinwheel Bouquet
- GOBLUE on Fridays

Isabel's Tree Lighting - November & December

- Become an Isabel's Tree Partner Location
- Pledge to light a certain number of bulbs at your company or organization

Pledge Description

Additional Opportunities

- Pillar of Hope Giving
- Brick Program
- Payroll Deduction
- In-Kind Donation
- Third-Party Fundraiser

Pledge Description

Continued on next page >>



SPONSORSHIP CONTRACT

Event Sponsorship

Isabel's Gala - March

- Presenting - \$20,000
- Diamond - \$10,000
- Red Carpet - \$5,000
- Champagne - \$2,500
- Program - \$1,000
- Friends - \$500

THE Summer Party - August

- Presenting - \$15,000
- Summer Night - \$10,000
- Golden Sunset - \$5,000
- Garden Party - \$2,500
- Backyard Barbeque - \$1,500
- Picnic - \$750

À La Carte

- Food - \$10,000
- Audio/Visual - \$5,000
- Floral & Décor - \$3000
- Wine - \$1,000
- Videography - \$750
- Photography - \$500

Sponsorship Customization Notes

Payment Options

- One-Time
- Monthly (12)
- Quarterly (4 Equal Payments)

Payment Method

- Cash
- Card
- Check # _____
- Stock

PRINT CONTACT NAME (AND TITLE IF CORPORATE SPONSOR)

SIGNATURE

DATE

Please remit form to Isabel's House Administrative Office:
620 West Republic Road, Suite 106, Springfield, MO 65807

OR

scan & email to Andi Hansen, Development Associate, at andih@isabelshouse.org

